

# ST. LOUIS CITY

## ENVIRONMENTAL HEALTH PROFILE



Missouri's 2nd Largest City

Population 314,867

● 56.2% of people are minorities

● The median household income is \$38,664

● 25.0% of people live in poverty



## HEALTH

### Asthma Hospitalizations

● 11.9 | Age-adjusted rate of hospitalizations per 10,000 people in 2016  
State Rate: 6.1

### Asthma ER Visits

● 81.4 | Age-adjusted rate of ER visits per 10,000 people in 2016  
State Rate: 42.7

### COPD Hospitalizations

● 20.5 | Age-adjusted rate of hospitalizations per 10,000 people in 2016  
State Rate: 23.8

### COPD ER Visits

● 35.3 | Age-adjusted rate of ER visits per 10,000 people in 2016  
State Rate: 51.7

### Heart Attack Hospitalizations

● 20.2 | Age-adjusted rate of hospitalizations per 10,000 people in 2016  
State Rate: 21.9

### Heat Related Illness

● 2.3 | Age-adjusted rate of ER visits per 100,000 people in 2016  
State Rate: 13.2

### Melanoma Incidence

● 30.4 | Age-adjusted rate of incidence per 100,000 people in 2016  
State Rate: 32.6

### Lung Cancer Incidence

● 78.2 | Age-adjusted rate of incidence per 100,000 people in 2016  
State Rate: 86.6



## SMOKING

### Smoke-free Laws

(As of October 2019)

100% smoke-free in non-hospitality workplaces, restaurants, and bars

### E-Cigarette Use

(As of October 2019)

Prohibited in non-hospitality workplaces, restaurants, and bars

● At or Above State Rate

● Below State Rate

\* Counts less than 20 are considered unreliable.

∅ Non-zero counts less than 5 are suppressed for patient confidentiality.



MISSOURI ENVIRONMENTAL PUBLIC HEALTH TRACKING PROGRAM

Bureau of Environmental Epidemiology  
Missouri Department of Health & Senior Services  
ephtn.dhss.mo.gov | EPHTN@health.mo.gov



# ST. LOUIS CITY

## ENVIRONMENTAL HEALTH PROFILE



### LEAD

#### Lead Exposure Risk Factors:

- Childhood elevated blood lead rate above state average
- Childhood blood lead testing rate below state average
- Elevated blood lead confirmation rate below state average
- Pre 1980 housing rate above state average
- Adult elevated blood lead rate above state average

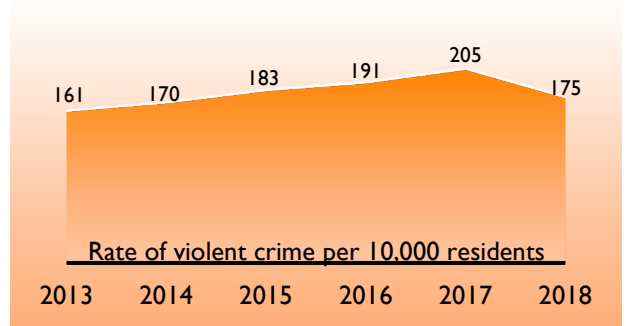
#### [Missouri Lead Exposure Risk Tool](#)

Follow this link to learn more about lead exposure risk factors and view a break down by county and zip code.



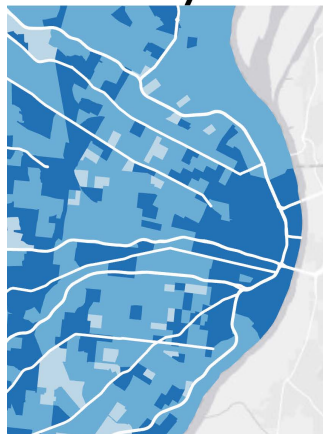
### VIOLENT CRIME

#### Trend from 2013-2018:

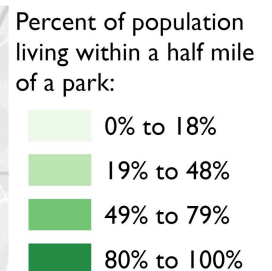
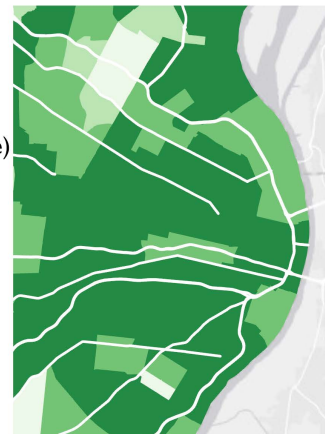


### COMMUNITY STRUCTURE

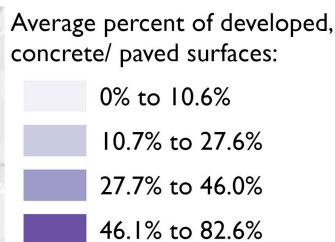
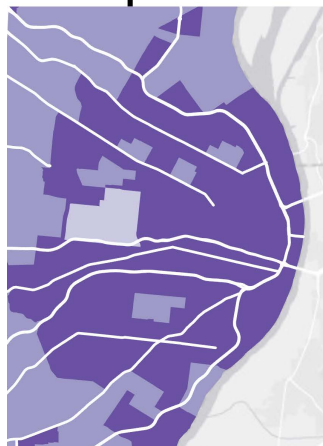
#### Walkability



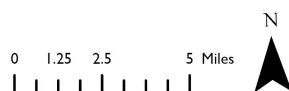
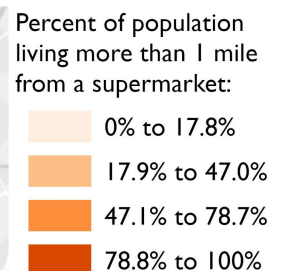
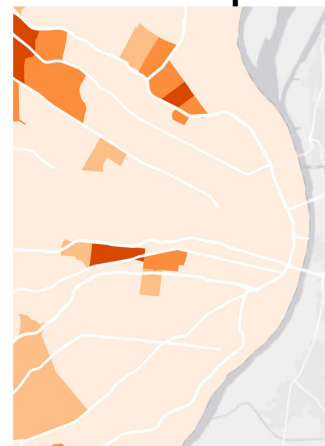
#### Access to Parks



#### Developed Surfaces



#### Access to Supermarkets



# ABOUT THE DATA

## ENVIRONMENTAL HEALTH PROFILE

	Source	Years	Description
City Size Rank	<a href="#">American Community Survey</a>	2013-2017	City size rank based on population. Source: American Community Survey 5-Year Estimates, 2013-2017, Table B01003.
Population	<a href="#">American Community Survey</a>	2013-2017	Total population. Source: American Community Survey 5-Year Estimates, 2013-2017, Table B01003.
Minorities	<a href="#">U.S. Census Bureau</a>	2010	Percentage of racial and ethnic minorities. State average: 19%. Source: 2010 U.S. Census, Summary File 1, Table GCT-P3.
Poverty	<a href="#">American Community Survey</a>	2013-2017	Percent of the population living in poverty. State average: 14.6%. Source: American Community Survey 5-Year Estimates, 2013-2017, Table GCT1701.
Income	<a href="#">American Community Survey</a>	2013-2017	Median annual household income. State average: \$51,542. Source: American Community Survey 5-Year Estimates, 2013-2017, Table GCT1901.



## HEALTH

	Source	Years	Description
Asthma COPD Heart Attack	<a href="#">MOPHIMS-EPHT</a> DHSS-EPHT	2016	Age-adjusted rates of emergency room (ER) visits and hospitalizations for asthma and COPD; and hospitalizations for heart attack per 10,000 people, based on the 2000 U.S. Census standard population. Source: DHSS MOPHIMS-Environmental Public Health Tracking (EPHT).
Melanoma Lung Cancer	<a href="#">MOPHIMS-EPHT</a> <a href="#">MOPHIMS-MICA</a> DHSS-EPHT	2016	Incidence of melanoma and lung cancer per 100,000 people, based on the 2000 U.S. Census standard population. Source: DHSS MOPHIMS-Missouri Information for Community Assessment (MICA) (cancer incidence).
Heat Related Illness	DHSS-EPHT	2016	Age-adjusted rate of ER visits per 100,000 people, based on the 2000 U.S. Census standard population. Source: DHSS Bureau of Environmental Epidemiology, EPHT.



## SMOKING

	Source	Years	Description
Smoke-free Laws	<a href="#">ANRF</a>	2019	Municipalities with 100% smoke-free laws. Source: American Nonsmoker's Rights Foundation (ANRF). In effect as of October 1, 2019.
E-Cigarette Use	<a href="#">ANRF</a>	2019	Municipalities with laws regulating use of electronic cigarettes. Source: ANRF. In effect as of October 1, 2019.



# ABOUT THE DATA

## ENVIRONMENTAL HEALTH PROFILE



### LEAD

	Source	Years	Description
Lead Exposure Risk Factors	<a href="#">DHSS-EPHT</a>	2018	Lead exposure risk factors contributing to the overall exposure risk. Source: DHSS Bureau of Environmental Epidemiology, EPHT.
Missouri Lead Exposure Risk Tool	<a href="#">DHSS-EPHT</a>	2018	Statewide break down of lead exposure risk factors by county and zip code. Source: DHSS Bureau of Environmental Epidemiology, EPHT.



### VIOLENT CRIME

	Source	Years	Description
Trend from 2013-2018	<a href="#">Missouri State Highway Patrol</a>	2013-2018	Number of violent crimes per 10,000 residents per year from 2013-2018. Violent Crimes include murder (manslaughter), rape, robbery, and aggravated assault. Source: Missouri State Highway Patrol, Offense Report- Part I Crimes, Report Name-CJ550101.



### COMMUNITY STRUCTURE

	Source	Years	Description
Walkability	<a href="#">EPA</a>	2006-2013	Relative walkability from 1 (least walkable) to 20 (most walkable). Walkability depends upon characteristics of the built environment that influence the likelihood of walking being used as a mode of travel. Based on the Smart Location Database (SLD) and 2010 U.S. Census tracts. Source: EPA, Walkability Index.
Access to Parks	<a href="#">National EPHT Portal</a>	2015	Percent of population living within a half mile of a park. Based on 2010 U.S. Census tracts. Source: CDC, National Environmental Public Health Tracking Data Explorer.
Developed Surfaces	<a href="#">National EPHT Portal</a>	2016	Average percent of impervious surfaces. Based on 2010 U.S. Census tracts. Source: CDC, National Environmental Public Health Tracking Data Explorer.
Access to Supermarkets	<a href="#">USDA</a>	2015	Percent of population living more than 1 mile from a supermarket. Based on 2010 U.S. Census tracts. Source: U.S. Department of Agriculture, Food Access Research Atlas.

### General Notes:

- City rates were approximated by aggregating data for zip codes. Because some zip codes span multiple city boundaries, the rates in this profile may differ from those presented by other sources.
- Due to the uniqueness of St. Louis City, it has both a county level and city level profile. Data shown may not be the same between the two profiles.

