

**Rate per 100,000 Population of Missouri Occupational Safety and Health
Professionals from 2003 - 2010**

Year	American Board of Preventative Medicine (ABPREVMED)		American College of Occupational and Environmental Health (ACOEM)		American Board of Occupational Health Nurses (ABOHN)		American Association of Occupational Health Nurses (AAOHN)		American Board of Industrial Hygiene (ABIH)	
	Missouri	U.S.	Missouri	U.S.	Missouri	U.S.	Missouri	U.S.	Missouri	U.S.
2003	1.5	1.7	3.9	4.1	3.5	4.7	6.4	6.1	4.2	5.0
2004	1.7	1.8	3.7	4.0	3.6	4.6	8.1	6.8	4.2	4.3
2005	1.6	1.8	3.3	3.5	3.6	4.5	7.9	6.4	4.2	4.9
2006	1.7	1.8	2.8	3.3	3.7	4.8	7.3	6.1	3.9	4.8
2007	1.8	1.9	2.7	3.1	3.1	4.1	7.3	5.8	4.1	4.7
2008	1.9	1.9	2.9	3.0	3.1	4.0	6.7	5.4	4.0	4.8
2009	2.1	2.2	2.9	3.0	3.2	4.1	5.1	4.6	4.2	5.1
2010	2.0	2.1	2.8	2.9	3.2	3.9	----	----	4.2	5.2

Rate per 100,000 Population of Missouri Occupational Safety and Health Professionals from 2003 - 2010

Year	American Industrial Hygiene Association (AIHA)		Board-Certified Safety Professionals (BCSP)		American Society of Safety Engineers (ASSE)		Total Occupational Safety and Health Professionals	
	Missouri	U.S.	Missouri	U.S.	Missouri	U.S.	Missouri	U.S.
2003	7.5	8.1	8.2	7.4	24.9	22.2	60.3	58.3
2004	7.7	7.9	8.4	7.5	26.8	23.6	64.2	61.0
2005	7.4	7.6	8.8	7.5	28.7	25.9	65.4	62.0
2006	6.9	7.2	8.7	7.5	24.6	22.0	59.6	57.5
2007	6.5	6.2	8.8	7.6	25.0	21.5	59.1	54.8
2008	6.7	6.1	9.7	7.9	27.1	22.0	62.3	55.1
2009	6.1	5.9	10.8	8.6	25.5	21.5	60.1	57.2
2010	5.2	5.6	10.7	8.8	26.5	22.5	54.6	50.9

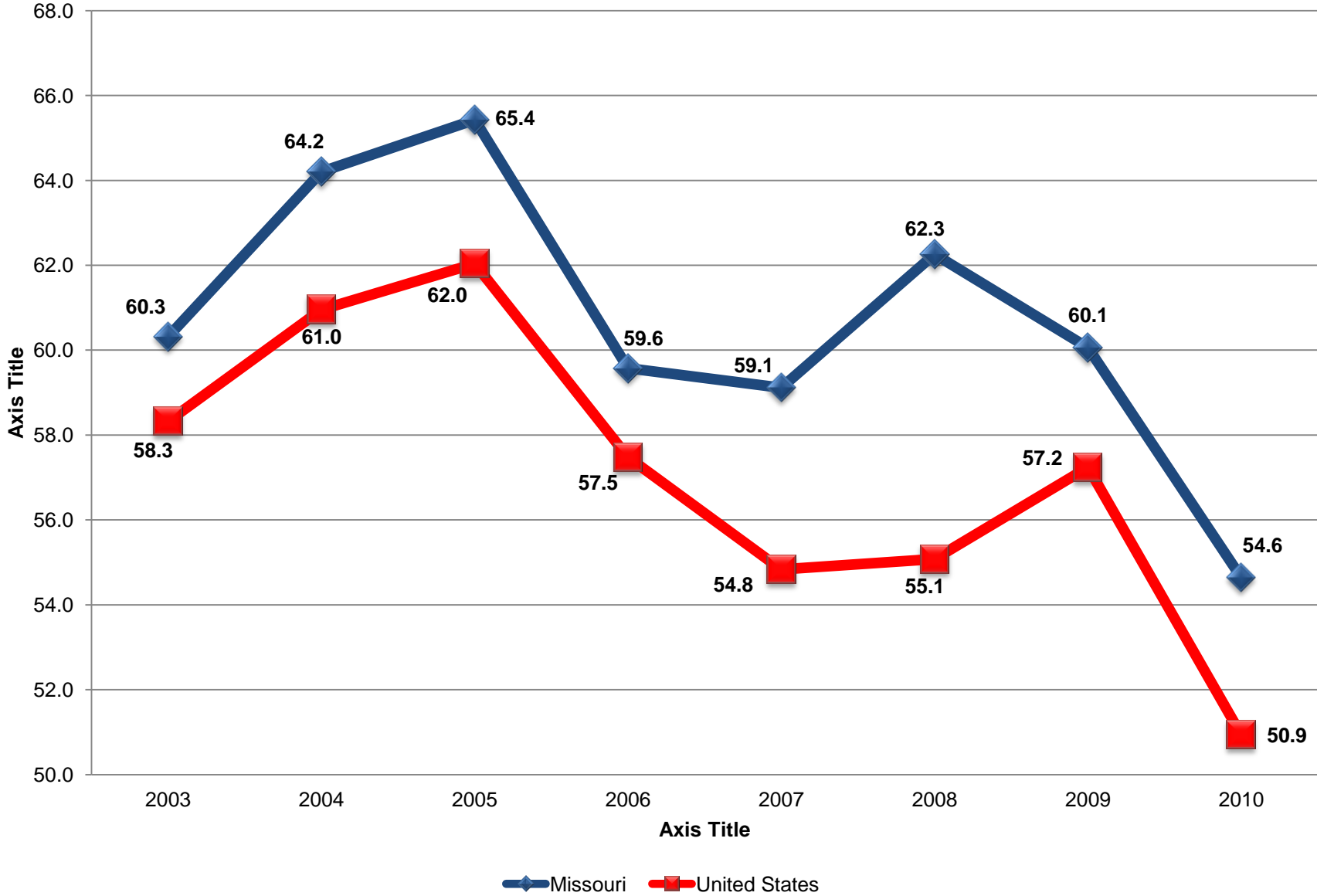
Data Notes:

-Data obtained from the Council of State and Territorial Epidemiologist (CSTE). More information can be found at: <http://www.cste.org/group/OHIndicators>

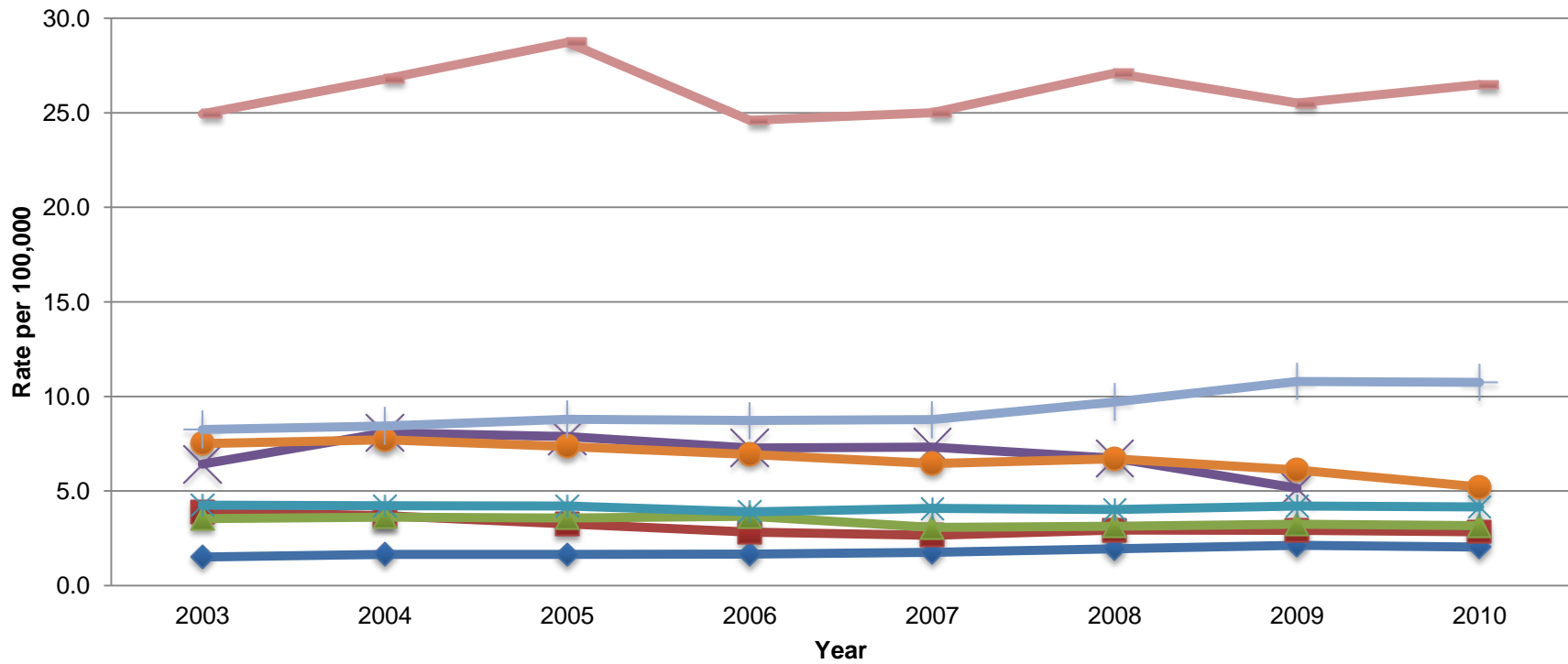
-Data for the American Association of Occupational Health Nurses (AAOHN) was not collected for 2010.

-In 2010 the "Total Occupational Safety and Health Professions" does not include professionals associated with AAOHN.

Rate per 100,000 Population of Missouri Occupational Safety and Health Professionals from 2003 - 2010

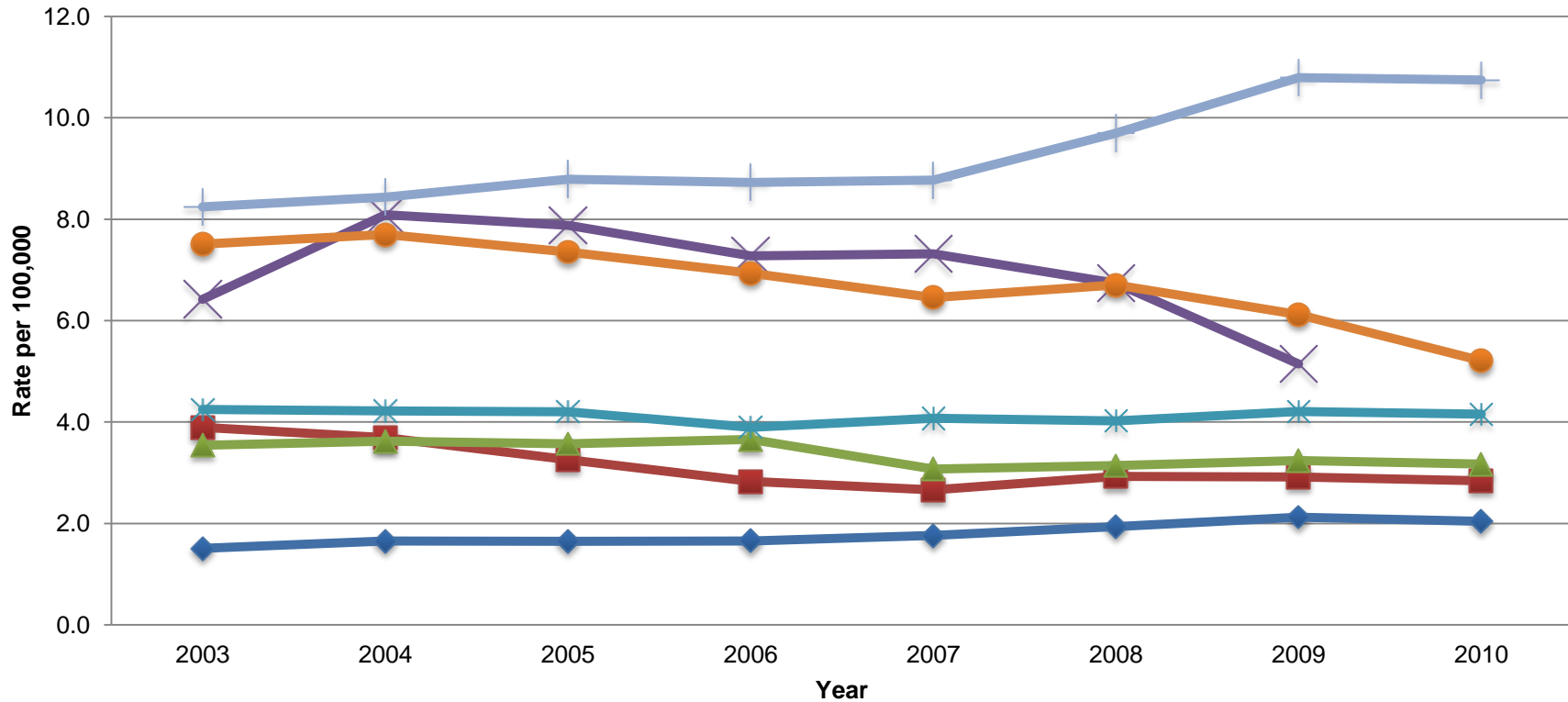


Rate per 100,000 Population of Missouri Occupational Safety and Health Professionals by Professional Association from 2003 - 2010



- ◆ American Board of Preventative Medicine (ABPREVMED)
- American College of Occupational and Environmental Health (ACOEM)
- ▲ American Board of Occupational Health Nurses (ABOHN)
- ✕ American Association of Occupational Health Nurses (AAOHN)
- ✱ American Board of Industrial Hygiene (ABIH)
- American Industrial Hygiene Association (AIHA)
- ⊥ Board-Certified Safety Professionals (BCSP)
- American Society of Safety Engineers (ASSE)

Rate per 100,000 Population of Missouri Occupational Safety and Health Professionals by Professional Association (except the ASSE) from 2003 - 2010



- ◆ American Board of Preventative Medicine (ABPREVMED)
- American College of Occupational and Environmental Health (ACOEM)
- ▲ American Board of Occupational Health Nurses (ABOHN)
- ✕ American Association of Occupational Health Nurses (AAOHN)
- ✱ American Board of Industrial Hygiene (ABIH)
- American Industrial Hygiene Association (AIHA)
- ⊥ Board-Certified Safety Professionals (BCSP)