

## Annual Number of Work-Related Fatalities by Age from 1992 - 2012

Age Group	1992		1993		1994		1995		1996	
	Missouri	U.S.	Missouri	U.S.	Missouri	U.S.	Missouri	U.S.	Missouri	U.S.
16 - 24 years	16	692	8	649	12	701	5	658	20	612
25 - 34 years	28	1,556	28	1,521	28	1,567	26	1,409	25	1,362
35 - 44 years	25	1,538	27	1,584	45	1,619	33	1,571	28	1,586
45 - 54 years	30	1,167	22	1,204	26	1,310	27	1,256	32	1,242
55 - 64 years	25	767	20	811	19	866	20	827	15	855
65+ years	15	467	23	522	24	525	11	515	19	504

Age Group	1997		1998		1999		2000		2001**	
	Missouri	U.S.	Missouri	U.S.	Missouri	U.S.	Missouri	U.S.	Missouri	U.S.
16 - 24 years	10	657	17	590	18	619	11	617	8	596
25 - 34 years	22	1,325	26	1,238	36	1,175	24	1,163	17	1,142
35 - 44 years	23	1,524	31	1,525	41	1,510	44	1,473	40	1,478
45 - 54 years	33	1,302	33	1,279	28	1,333	25	1,313	33	1,368
55 - 64 years	22	875	19	836	18	816	25	831	20	775
65+ years	11	520	19	541	21	565	16	488	27	530

## Annual Number of Work-Related Fatalities by Age from 1992 - 2012

Age Group	2002		2003		2004		2005		2006	
	Missouri	U.S.	Missouri	U.S.	Missouri	U.S.	Missouri	U.S.	Missouri	U.S.
16 - 24 years	12	553	10	574	9	549	7	545	15	517
25 - 34 years	29	1,023	28	1,018	20	996	30	1,017	26	1,041
35 - 44 years	37	1,403	34	1,329	34	1,342	36	1,243	32	1,288
45 - 54 years	44	1,253	31	1,301	48	1,384	49	1,389	34	1,417
55 - 64 years	24	784	30	802	21	907	25	933	26	963
65+ years	26	495	20	523	32	569	34	578	33	599

Age Group	2007		2008		2009		2010		2011	
	Missouri	U.S.	Missouri	U.S.	Missouri	U.S.	Missouri	U.S.	Missouri	U.S.
16 - 24 years	9	541	15	442	7	346	4	319	7	366
25 - 34 years	24	991	20	850	22	704	15	785	21	714
35 - 44 years	35	1,168	30	1,113	21	908	23	868	18	875
45 - 54 years	38	1,425	35	1,292	32	1,173	25	1,169	29	1,222
55 - 64 years	33	934	19	920	33	853	17	948	30	936
65+ years	16	574	29	580	25	551	20	582	26	569

## Annual Number of Work-Related Fatalities by Age from 1992 - 2012

Age Group	2012		Average Number of Cases per Year	
	Missouri	U.S.	Missouri	U.S.
16 - 24 years	10	356	11	548
25 - 34 years	14	736	24	1,111
35 - 44 years	11	829	31	1,323
45 - 54 years	25	1,161	32	1,284
55 - 64 years	19	936	23	865
65+ years	9	588	22	542

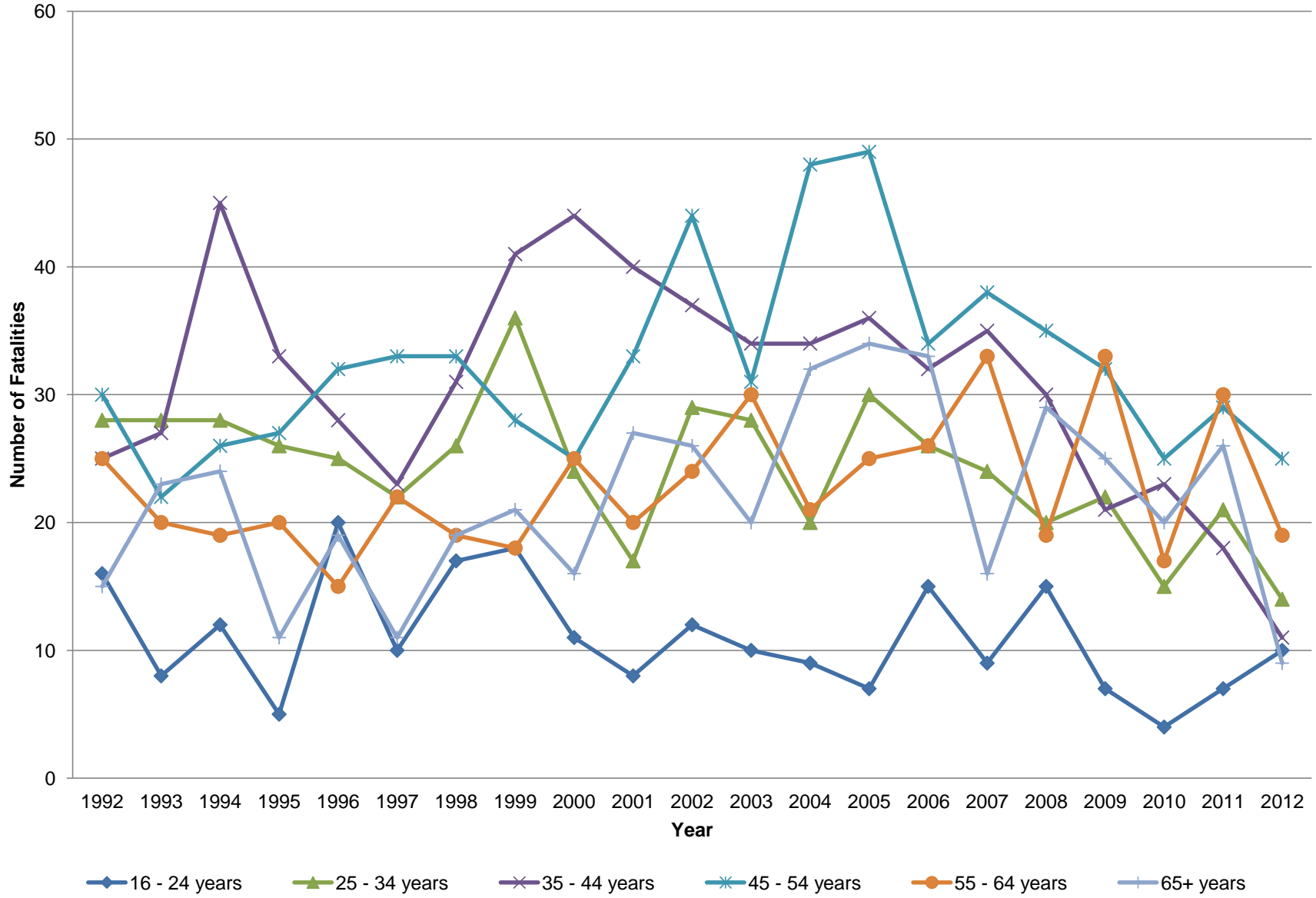
Data Notes:

-Data obtained from the United States Department of Labor, Bureau of Labor Statistics (BLS). For more information go to:  
<http://www.bls.gov/iif/home.htm>

-Data for the nation was obtained from the United States Department of Labor, Bureau of Labor Statistics. More information can be found at:  
[www.bls.gov](http://www.bls.gov)

-\*\*Data for 2001 does not include the Sept. 11th terrorist attacks

## Annual Total Number of Work-Related Fatalities by Age in Missouri from 1992 - 2012



## Average Annual Number of Work-Related Fatalities by Age in Missouri from 1992 - 2012

