

**Percentage of Missouri Civilian Employment
by Number of Hours Worked from 2003 - 2012**

Year	Missouri Total Worked 0-39 Hours	U.S. Total Worked 0-39 Hours	Missouri Percentage of Civilian Employment that Worked 0-39 Hours	U.S. Percentage of Civilian Employment that Worked 0-39 Hours	Missouri Total Worked 40 Hours	U.S. Total Worked 40 Hours	Missouri Percentage of Civilian Employment that Worked 40 Hours	U.S. Percentage of Civilian Employment that Worked 40 Hours
2003	826,000	40,858,000	29.0%	29.7%	1,160,000	54,607,000	40.7%	39.6%
2004	841,000	41,507,000	29.6%	29.8%	1,076,000	54,878,000	37.8%	39.4%
2005	837,000	41,639,000	29.3%	29.4%	1,080,000	56,179,000	37.8%	39.6%
2006	829,000	41,812,000	28.6%	29.0%	1,098,000	58,078,000	37.9%	40.2%
2007	822,000	41,803,000	28.4%	28.6%	1,135,000	59,973,000	39.2%	41.1%
2008	794,000	43,040,000	28.0%	29.6%	1,181,000	59,732,000	41.7%	41.1%
2009	934,000	47,550,000	33.6%	34.0%	1,071,000	54,570,000	38.5%	39.0%
2010	884,000	44,792,000	32.2%	32.2%	1,072,000	56,478,000	39.1%	40.6%
2011	998,000	49,416,000	35.5%	32.0%	1,144,000	57,064,000	40.7%	40.8%
2012	839,000	44,172,000	29.9%	31.0%	1,160,000	58,778,000	41.4%	41.3%

Percentage of Missouri Civilian Employment by Number of Hours Worked from 2003 - 2012

Year	Missouri Total Worked 41+ Hours	U.S. Total Worked 41+ Hours	Missouri Percentage of Civilian Employment that Worked 41+ Hours	U.S. Percentage of Civilian Employment that Worked 41+ Hours
2003	759,000	36,802,000	26.6%	26.7%
2004	821,000	37,386,000	28.9%	26.8%
2005	822,000	38,400,000	28.8%	27.1%
2006	852,000	38,790,000	29.4%	26.9%
2007	832,000	38,552,000	28.7%	26.4%
2008	758,000	37,052,000	26.7%	25.5%
2009	676,000	32,324,000	24.3%	23.1%
2010	686,000	32,734,000	25.0%	23.5%
2011	669,000	33,389,000	23.8%	23.9%
2012	709,000	34,388,000	25.3%	24.1%

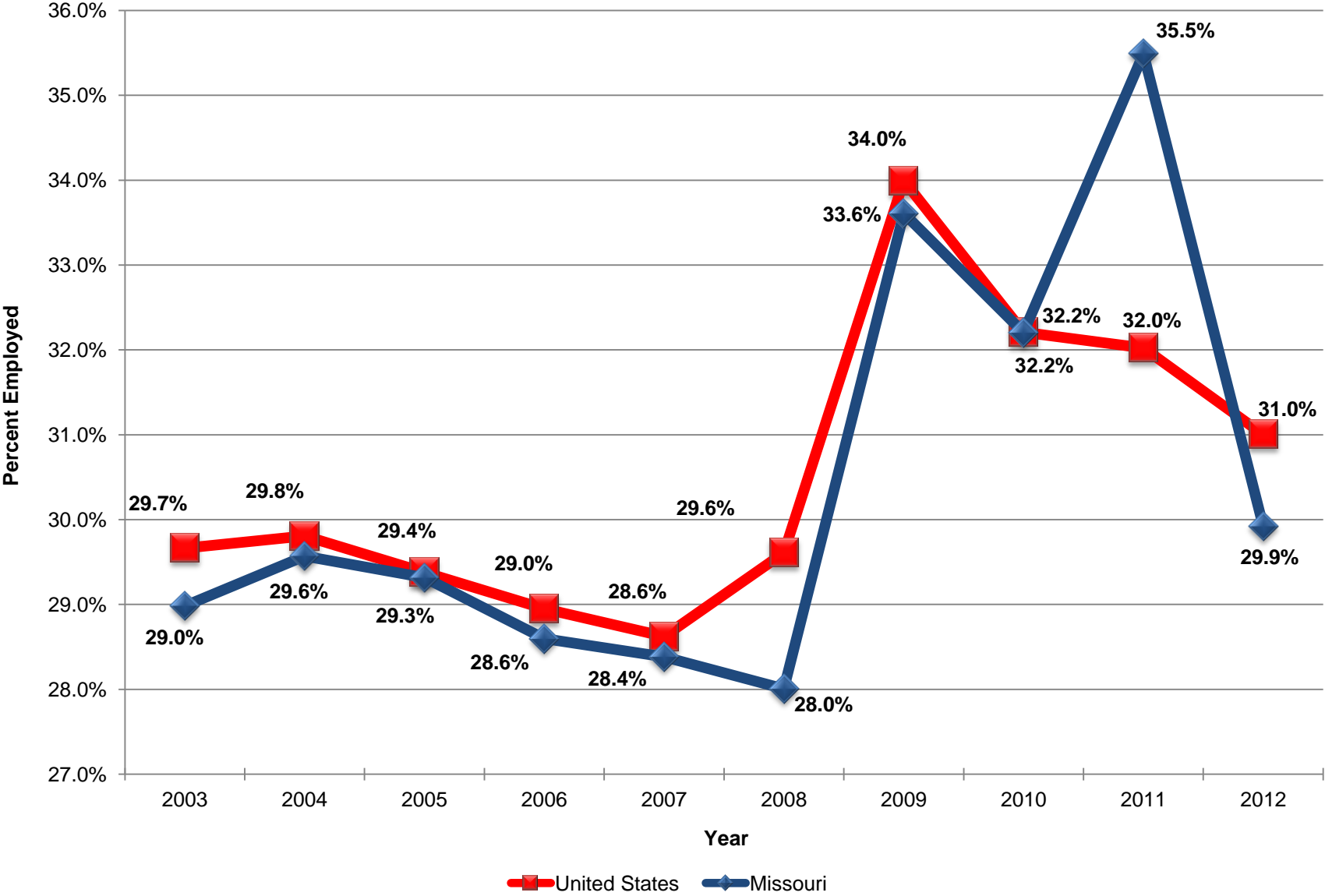
Data Notes:

-Data obtained from the United States Department of Labor, Bureau of Labor Statistics: Geographic Profile of Employment and Unemployment. For more information go to: <http://www.bls.gov/opub/gp/laugp.htm>

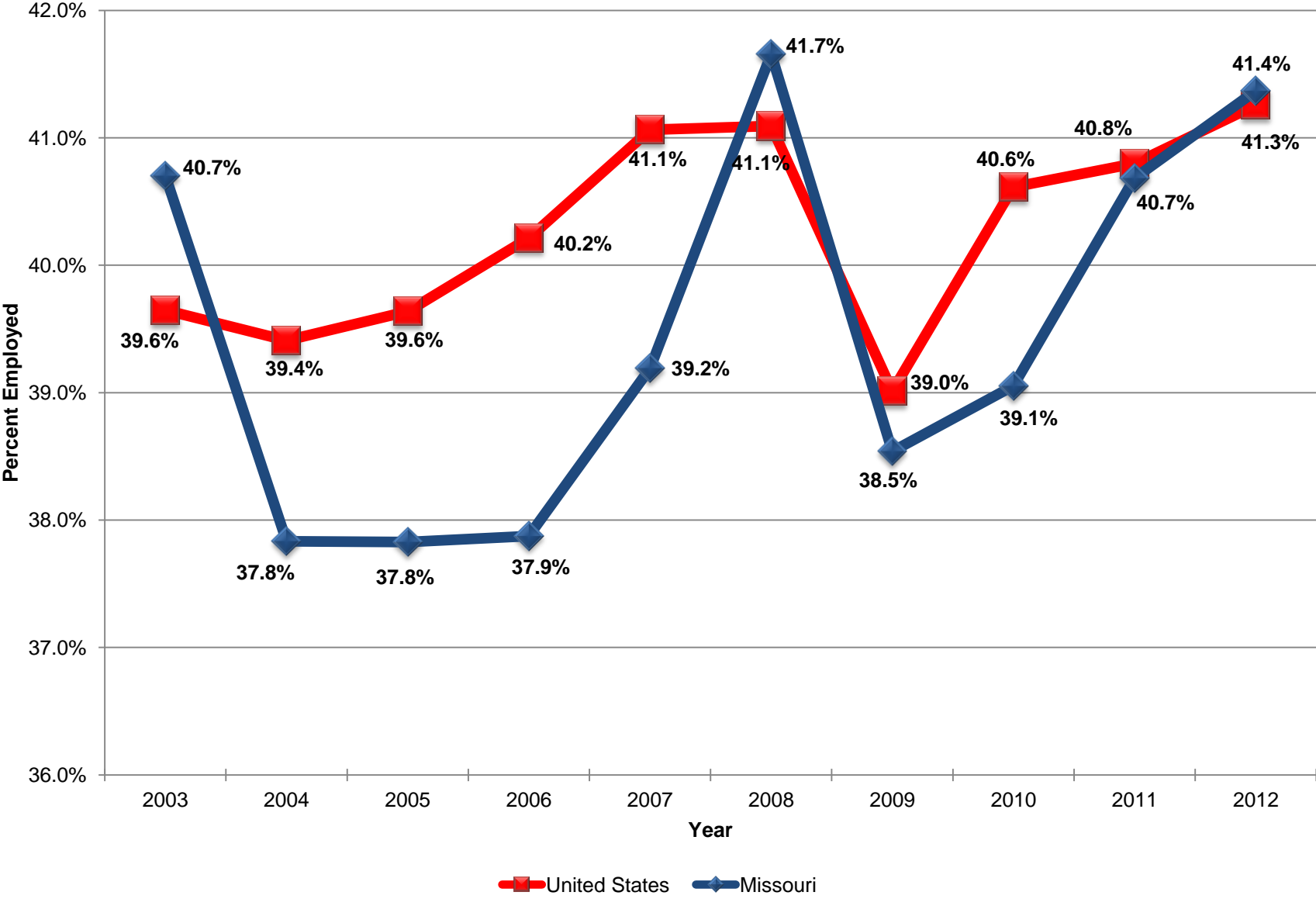
-Hours worked refers to the number of hours worked during the survey week

-Data for the nation was obtained from the United States Department of Labor, Bureau of Labor Statistics: Persons at work in agriculture and related and in nonagricultural industries by hours of work. More information can be found at: www.bls.gov

Percentage of Missouri Civilians Working 1 - 39 hours per week from 2003 - 2012



Percentage of Missouri Civilians Working 40 hours per week from 2003 - 2012



Percentage of Missouri Civilians Working >40 hours per week from 2003 - 2012

