

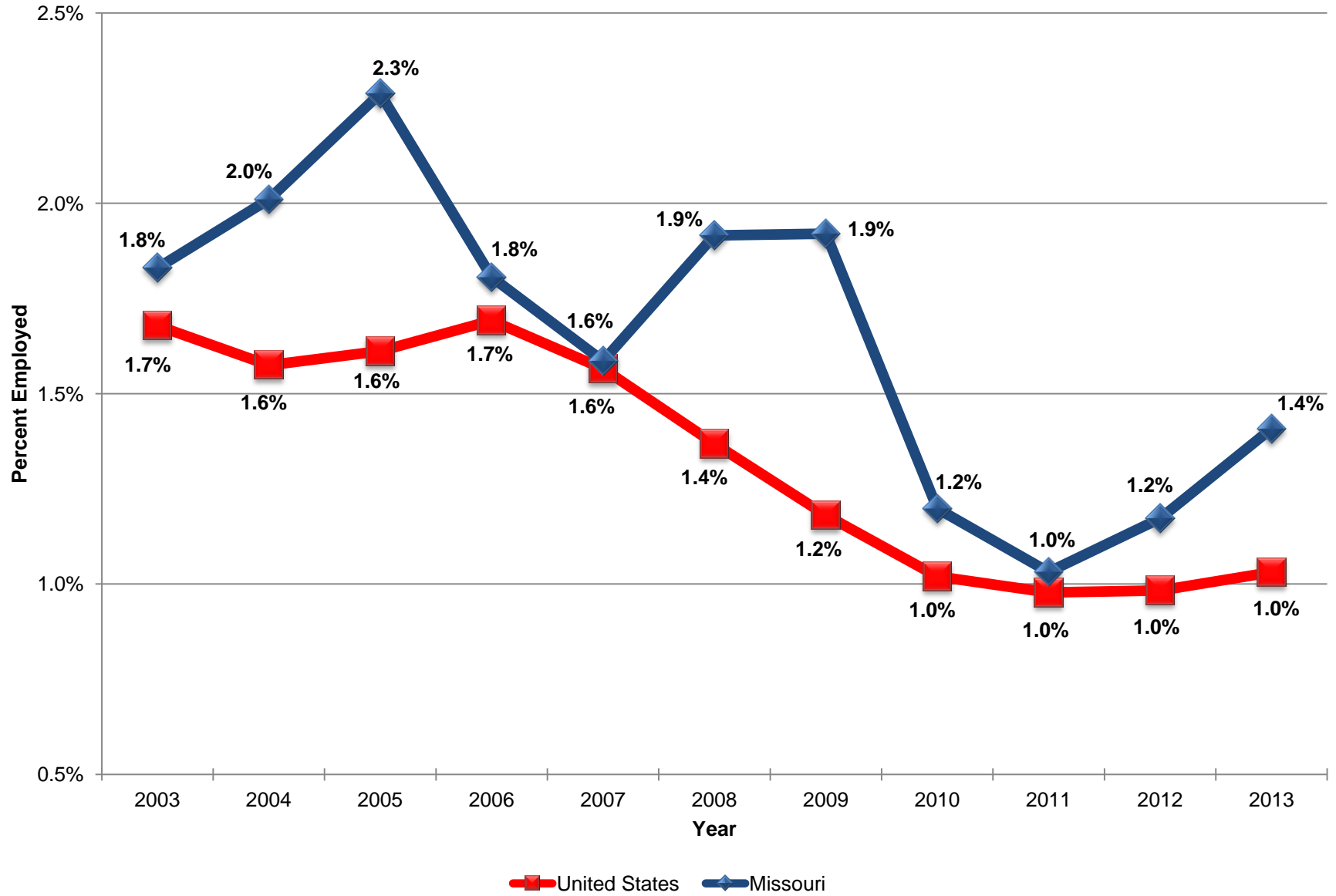
**Percentage of Missouri Civilian Employment by Age Group  
from 2003 - 2013**

Year	Missouri Percentage of Civilian Employment Age 16-17	U.S. Percentage of Civilian Employment Age 16-17	Missouri Percentage of Civilian Employment Age 18-64	U.S. Percentage of Civilian Employment Age 18-64	Missouri Percentage of Civilian Employment Age 65+	U.S. Percentage of Civilian Employment Age 65+
2003	1.8%	1.7%	94.4%	95.0%	3.8%	3.3%
2004	2.0%	1.6%	94.1%	95.0%	3.9%	3.5%
2005	2.3%	1.6%	94.1%	94.8%	3.7%	3.6%
2006	1.8%	1.7%	94.2%	94.6%	4.0%	3.7%
2007	1.6%	1.6%	94.4%	94.6%	4.0%	3.8%
2008	1.9%	1.4%	94.0%	94.5%	4.1%	4.1%
2009	1.9%	1.2%	94.5%	94.4%	3.6%	4.4%
2010	1.2%	1.0%	94.5%	94.5%	4.3%	4.5%
2011	1.0%	1.0%	93.9%	94.2%	5.0%	4.8%
2012	1.2%	1.0%	93.3%	93.8%	5.5%	5.2%
2013	1.4%	1.0%	93.1%	93.6%	5.5%	5.4%

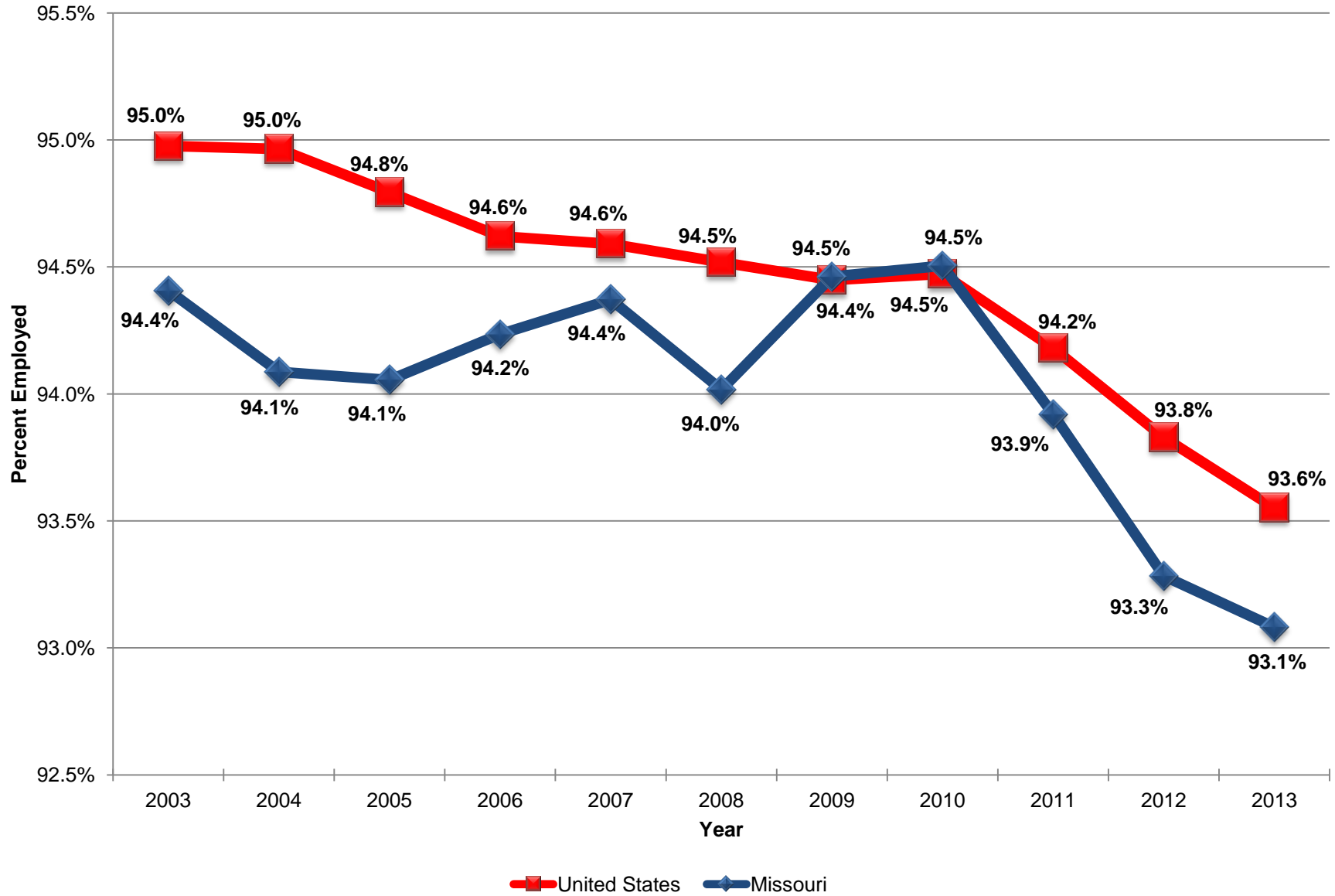
Data Notes:

-Data obtained from the United States Department of Labor, Bureau of Labor Statistics. For more information go to: <http://dataferrett.census.gov>

## Percentage of Missouri Civilian Employment Age 16 - 17 years from 2003 - 2013



## Percentage of Missouri Civilian Employment Age 18 - 64 years from 2003 - 2013



## Percentage of Missouri Civilian Employment Age 65+ from 2003 - 2013

