

Annual Crude Rate of Inpatient Hospitalizations per 100,000 Employed Persons Age 16 and Older in Missouri by Age from 2003 - 2011

Year	Annual Crude Rate of per 100,000 Employed Persons Age 16 and Older by Age						Annual Crude-Rate of Work-Related Hospitalizations per 100,000 Population
	16 - 24	25 - 34	35 - 44	45 - 54	55 - 64	65+	
2003	30.66	71.61	106.47	126.74	108.20	49.08	119.19
2004	49.32	84.19	126.11	143.17	162.04	181.65	115.54
2005	58.35	75.20	118.30	123.03	135.75	216.67	106.76
2006	51.44	63.69	98.51	117.78	114.21	202.68	94.65
2007	54.61	56.27	101.09	111.46	128.32	183.48	93.40
2008	39.23	59.39	90.94	97.72	100.50	194.74	83.53
2009	25.68	45.28	65.28	94.57	98.82	244.00	74.02
2010	26.35	43.89	68.41	86.49	106.94	255.56	75.77
2011	26.87	40.66	61.97	83.60	103.78	137.59	67.99

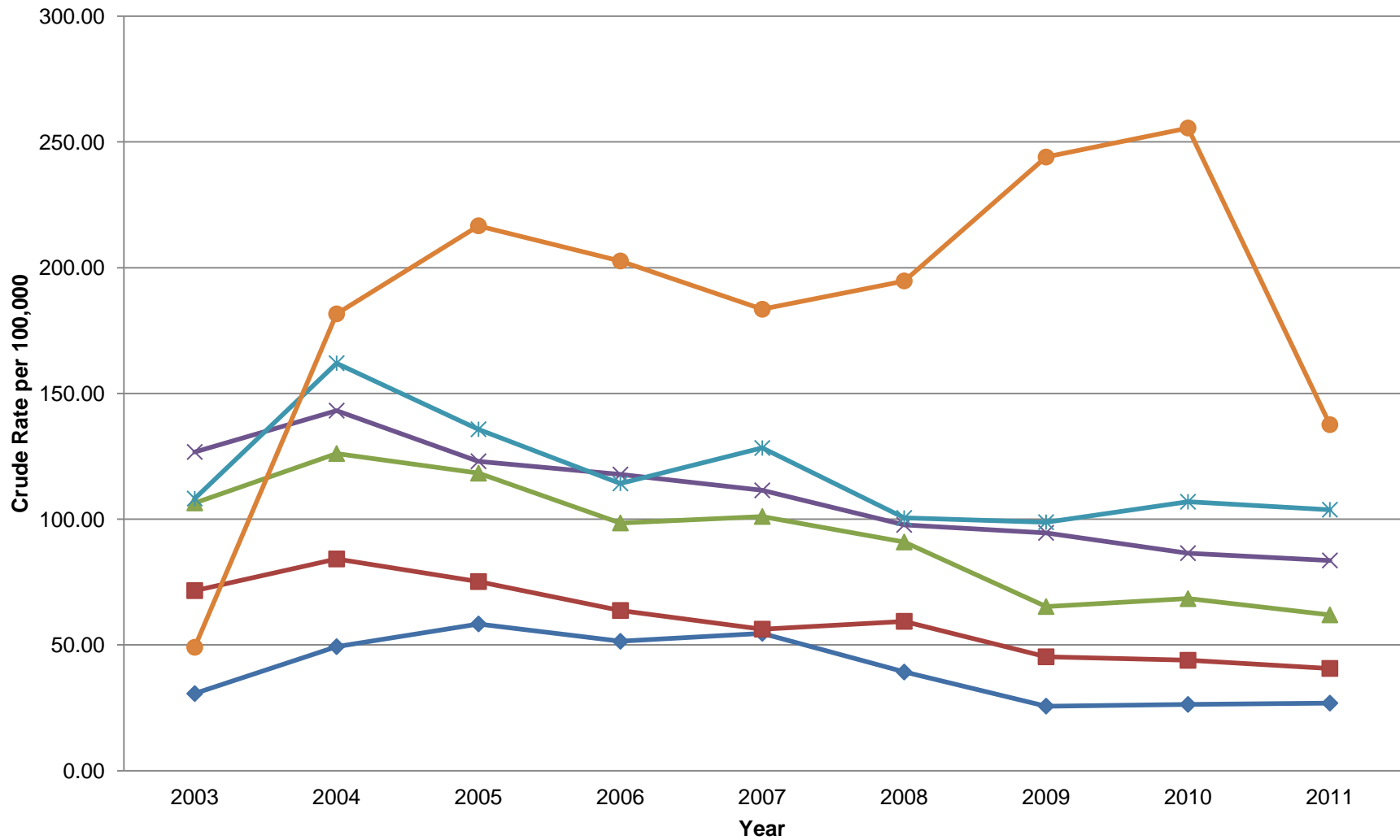
Data Notes:

-Data obtained from the Missouri Department of Health and Senior Services - Bureau of Health Care Analysis and Data Dissemination (BHCADD)

-Data obtained from the United States Department of Labor, Bureau of Labor Statistics. For more information go to: <http://www.bls.gov/gps/#tables>

-Workers' compensation eligibility criteria and availability of data from workers' compensation programs varies among states, prohibiting state-level data from being directly compared to other states or with national estimates

Annual Crude Rate of Inpatient Hospitalizations per 100,000 Employed Persons Age 16 and Older in Missouri by Age from 2003 - 2011



◆ 16 - 24 ■ 25 - 34 ▲ 35 - 44 ✕ 45 - 54 * 55 - 64 ● 65+