

KANSAS CITY

ENVIRONMENTAL HEALTH PROFILE



Missouri's Largest City

Population 476,974

● 39.3% of people
are minorities

● The median household
income is \$50,136

● 17.3% of people
live in poverty



HEALTH

Asthma Hospitalizations

● 11.3 | Age-adjusted rate of hospitalizations
per 10,000 people in 2016
State Rate: 6.1

Asthma ER Visits

● 86.8 | Age-adjusted rate of ER visits
per 10,000 people in 2016
State Rate: 42.7

COPD Hospitalizations

● 22.9 | Age-adjusted rate of hospitalizations
per 10,000 people in 2016
State Rate: 23.8

COPD ER Visits

● 64.3 | Age-adjusted rate of ER visits
per 10,000 people in 2016
State Rate: 51.7

Heart Attack Hospitalizations

● 17.8 | Age-adjusted rate of hospitalizations
per 10,000 people in 2016
State Rate: 21.9

Heat Related Illness

● 4.7 | Age-adjusted rate of ER visits
per 100,000 people in 2016
State Rate: 13.2

Melanoma Incidence

● 23.6 | Age-adjusted rate of incidence
per 100,000 people in 2016
State Rate: 32.6

Lung Cancer Incidence

● 81.6 | Age-adjusted rate of incidence
per 100,000 people in 2016
State Rate: 86.6



SMOKING

Smoke-free Laws

(As of October 2019)

100% smoke-free in non-hospitality
workplaces, restaurants, and bars

E-Cigarette Use

(As of October 2019)

Prohibited in non-hospitality
workplaces, restaurants, and bars

● At or Above State Rate

● Below State Rate

* Counts less than 20 are considered unreliable.

Ø Non-zero counts less than 5 are suppressed for patient confidentiality.



MISSOURI ENVIRONMENTAL PUBLIC HEALTH TRACKING PROGRAM

Bureau of Environmental Epidemiology
Missouri Department of Health & Senior Services
ephtn.dhss.mo.gov | EPHTN@health.mo.gov



KANSAS CITY

ENVIRONMENTAL HEALTH PROFILE



LEAD

Lead Exposure Risk Factors:

Childhood elevated blood lead rate above state average
 Childhood blood lead testing rate below state average
 Elevated blood lead confirmation rate below state average
 Pre 1980 housing rate above state average

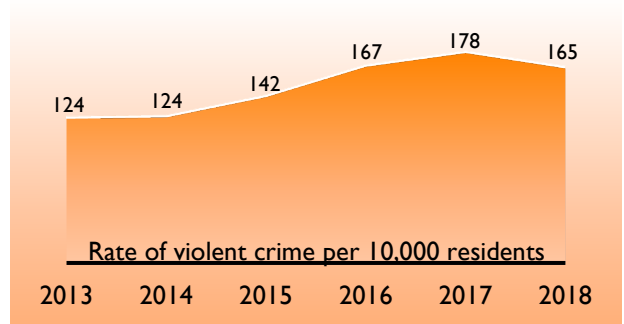
[Missouri Lead Exposure Risk Tool](#)

Follow this link to learn more about lead exposure risk factors and view a break down by county and zip code.



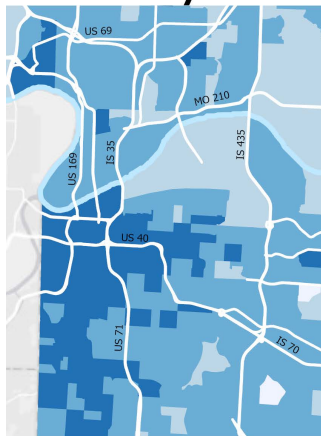
VIOLENT CRIME

Trend from 2013-2018:



COMMUNITY STRUCTURE

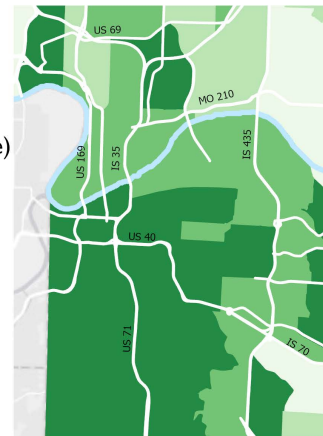
Walkability



Walkability index:

- 1 to 5.75 (Least Walkable)
- 5.76 to 10.50 (Below Average)
- 10.51 to 15.25 (Above Average)
- 15.26 to 20 (Most Walkable)

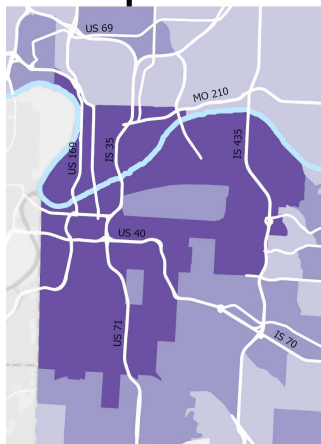
Access to Parks



Percent of population living within a half mile of a park:

- 0% to 18%
- 19% to 48%
- 49% to 79%
- 80% to 100%

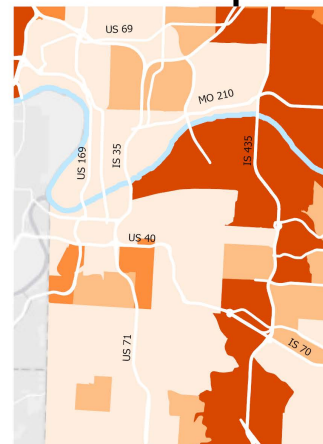
Developed Surfaces



Average percent of developed, concrete/paved surfaces:

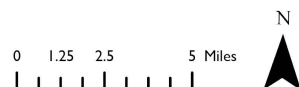
- 0% to 10.6%
- 10.7% to 27.6%
- 27.7% to 46.0%
- 46.1% to 82.6%

Access to Supermarkets



Percent of population living more than 1 mile from a supermarket:

- 0% to 17.8%
- 17.9% to 47.0%
- 47.1% to 78.7%
- 78.8% to 100%



ABOUT THE DATA

ENVIRONMENTAL HEALTH PROFILE

	Source	Years	Description
City Size Rank	American Community Survey	2013-2017	City size rank based on population. Source: American Community Survey 5-Year Estimates, 2013-2017, Table B01003.
Population	American Community Survey	2013-2017	Total population. Source: American Community Survey 5-Year Estimates, 2013-2017, Table B01003.
Minorities	U.S. Census Bureau	2010	Percentage of racial and ethnic minorities. State average: 19%. Source: 2010 U.S. Census, Summary File 1, Table GCT-P3.
Poverty	American Community Survey	2013-2017	Percent of the population living in poverty. State average: 14.6%. Source: American Community Survey 5-Year Estimates, 2013-2017, Table GCT1701.
Income	American Community Survey	2013-2017	Median annual household income. State average: \$51,542. Source: American Community Survey 5-Year Estimates, 2013-2017, Table GCT1901.



HEALTH

	Source	Years	Description
Asthma COPD Heart Attack	MOPHIMS-EPHT DHSS-EPHT	2016	Age-adjusted rates of emergency room (ER) visits and hospitalizations for asthma and COPD; and hospitalizations for heart attack per 10,000 people, based on the 2000 U.S. Census standard population. Source: DHSS MOPHIMS-Environmental Public Health Tracking (EPHT).
Melanoma Lung Cancer	MOPHIMS-EPHT MOPHIMS-MICA DHSS-EPHT	2016	Incidence of melanoma and lung cancer per 100,000 people, based on the 2000 U.S. Census standard population. Source: DHSS MOPHIMS-Missouri Information for Community Assessment (MICA) (cancer incidence).
Heat Related Illness	DHSS-EPHT	2016	Age-adjusted rate of ER visits per 100,000 people, based on the 2000 U.S. Census standard population. Source: DHSS Bureau of Environmental Epidemiology, EPHT.



SMOKING

	Source	Years	Description
Smoke-free Laws	ANRF	2019	Municipalities with 100% smoke-free laws. Source: American Nonsmoker's Rights Foundation (ANRF). In effect as of October 1, 2019.
E-Cigarette Use	ANRF	2019	Municipalities with laws regulating use of electronic cigarettes. Source: ANRF. In effect as of October 1, 2019.



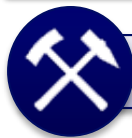
MISSOURI ENVIRONMENTAL PUBLIC HEALTH TRACKING PROGRAM

Bureau of Environmental Epidemiology
Missouri Department of Health & Senior Services
ephnt.dhss.mo.gov | EPHTN@health.mo.gov



ABOUT THE DATA

ENVIRONMENTAL HEALTH PROFILE



LEAD

	Source	Years	Description
Lead Exposure Risk Factors	DHSS-EPHT	2018	Lead exposure risk factors contributing to the overall exposure risk. Source: DHSS Bureau of Environmental Epidemiology, EPHT.
Missouri Lead Exposure Risk Tool	DHSS-EPHT	2018	Statewide break down of lead exposure risk factors by county and zip code. Source: DHSS Bureau of Environmental Epidemiology, EPHT.



VIOLENT CRIME

	Source	Years	Description
Trend from 2013-2018	Missouri State Highway Patrol	2013-2018	Number of violent crimes per 10,000 residents per year from 2013-2018. Violent Crimes include murder (manslaughter), rape, robbery, and aggravated assault. Source: Missouri State Highway Patrol, Offense Report- Part I Crimes, Report Name- CJ550101.



COMMUNITY STRUCTURE

	Source	Years	Description
Walkability	EPA	2006-2013	Relative walkability from 1 (least walkable) to 20 (most walkable). Walkability depends upon characteristics of the built environment that influence the likelihood of walking being used as a mode of travel. Based on the Smart Location Database (SLD) and 2010 U.S. Census tracts. Source: EPA, Walkability Index.
Access to Parks	National EPHT Portal	2015	Percent of population living within a half mile of a park. Based on 2010 U.S. Census tracts. Source: CDC, National Environmental Public Health Tracking Data Explorer.
Developed Surfaces	National EPHT Portal	2016	Average percent of impervious surfaces. Based on 2010 U.S. Census tracts. Source: CDC, National Environmental Public Health Tracking Data Explorer.
Access to Supermarkets	USDA	2015	Percent of population living more than 1 mile from a supermarket. Based on 2010 U.S. Census tracts. Source: U.S. Department of Agriculture, Food Access Research Atlas.

General Notes:

- City rates were approximated by aggregating data for zip codes. Because some zip codes span multiple city boundaries, the rates in this profile may differ from those presented by other sources.
- Due to the uniqueness of St. Louis City, it has both a county level and city level profile. Data shown may not be the same between the two profiles.

