

Number and Percent of Work-Related Burn Hospitalizations for Persons Age 16 and Older in Missouri by Body Part Burned from 2003 - 2011

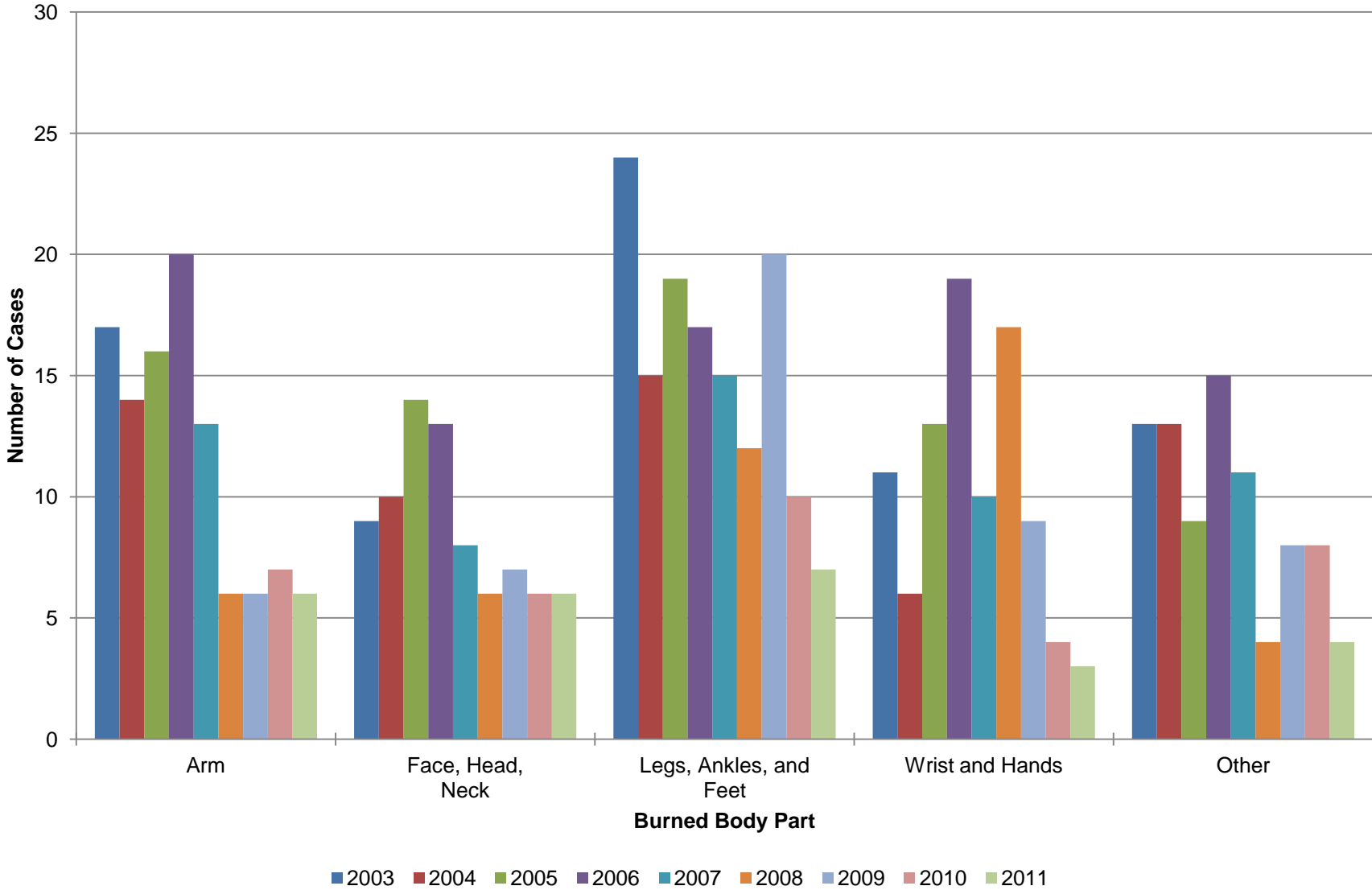
Measures that have been suppressed to protect patient confidentiality have been identified using italic text with a shaded background.

Year	Arm		Face, Head, Neck		Legs, Ankles, and Feet		Wrist and Hands		Other		Missouri Annual Number of Work-Related Burns
	Count	Percent	Count	Percent	Count	Percent	Count	Percent	Count	Percent	
2003	17	23.0%	9	12.2%	24	32.4%	11	14.9%	13	17.6%	74
2004	14	24.1%	10	17.2%	15	25.9%	6	10.3%	13	22.4%	58
2005	16	22.5%	14	19.7%	19	26.8%	13	18.3%	9	12.7%	71
2006	20	23.8%	13	15.5%	17	20.2%	19	22.6%	15	17.9%	84
2007	13	22.8%	8	14.0%	15	26.3%	10	17.5%	11	19.3%	57
2008	6	13.3%	*	*	12	26.7%	17	37.8%	*	*	45
2009	6	12.0%	7	14.0%	20	40.0%	9	18.0%	8	16.0%	50
2010	7	20.0%	*	*	10	28.6%	*	*	8	22.9%	35
2011	6	23.1%	6	23.1%	7	26.9%	*	*	*	*	26

Data Notes:

- Data obtained from the Missouri Department of Health and Senior Services - Bureau of Health Care Analysis and Data Dissemination (BHCADD)
- Counts based off of small cell counts of 0, 1, 2, 3, and 4 have been suppressed to protect patient confidentiality. In some cases secondary suppression was used to suppress rates based on cell counts >4 to prevent reverse calculation of totals to identify small cell counts.
- Workers' compensation eligibility criteria and availability of data from workers' compensation programs varies among states, prohibiting state-level data from being directly compared to other states or with national estimates

Annual Number of Work-Related Burn Hospitalizations for Persons Age 16 and Older Part in Missouri by Body Part Burned from 2003 - 2011



Percent of Work-Related Burn Hospitalizations for Persons Age 16 and Older Part in Missouri by Body Part Burned from 2003 - 2011

