

**Estimated Annual Total Number of Work-Related Injuries and Illnesses Involving Days Away
from Work by Age from 1996 - 2012**

Age Group	1996		1997		1998		1999		2000	
	Missouri	U.S.	Missouri	U.S.	Missouri	U.S.	Missouri	U.S.	Missouri	U.S.
16 - 19 years	1,763	73,817	1,364	59,737	1,424	60,415	1,360	58,206	1,132	54,134
20 - 24 years	4,963	231,273	3,792	208,054	3,241	200,225	3,791	197,841	3,861	186,336
25 - 34 years	10,776	559,893	9,363	532,816	8,537	487,214	9,624	457,555	8,052	430,922
35 - 44 years	11,212	511,689	10,907	517,842	11,293	488,819	9,538	483,545	10,319	481,267
45 - 54 years	6,203	304,382	6,259	314,158	6,780	311,745	6,671	310,502	7,015	325,808
55 - 64 years	2,221	126,494	2,563	134,737	3,536	131,717	2,995	138,391	3,142	142,540
65+ years	384	17,664	273	22,380	346	21,104	603	22,538	356	25,334

Age Group	2001		2002		2003		2004		2005	
	Missouri	U.S.	Missouri	U.S.	Missouri	U.S.	Missouri	U.S.	Missouri	U.S.
16 - 19 years	973	44,535	677	38,387	940	42,210	880	38,230	630	41,530
20 - 24 years	2,838	171,659	2,530	159,229	2,360	143,800	2,730	141,730	2,050	133,760
25 - 34 years	6,237	389,065	6,287	358,377	5,180	313,430	5,060	303,880	6,220	290,500
35 - 44 years	7,454	438,445	8,317	400,871	6,070	357,050	7,040	331,610	6,190	311,830
45 - 54 years	6,046	315,794	5,891	304,970	4,990	284,690	5,300	272,250	5,260	282,310
55 - 64 years	2,590	135,690	2,562	143,523	2,640	132,130	2,490	128,810	2,600	135,290
65+ years	450	24,541	536	25,103	580	24,380	490	23,950	440	27,050

**Estimated Annual Total Number of Work-Related Injuries and Illnesses Involving Days Away
from Work by Age from 1996 - 2012**

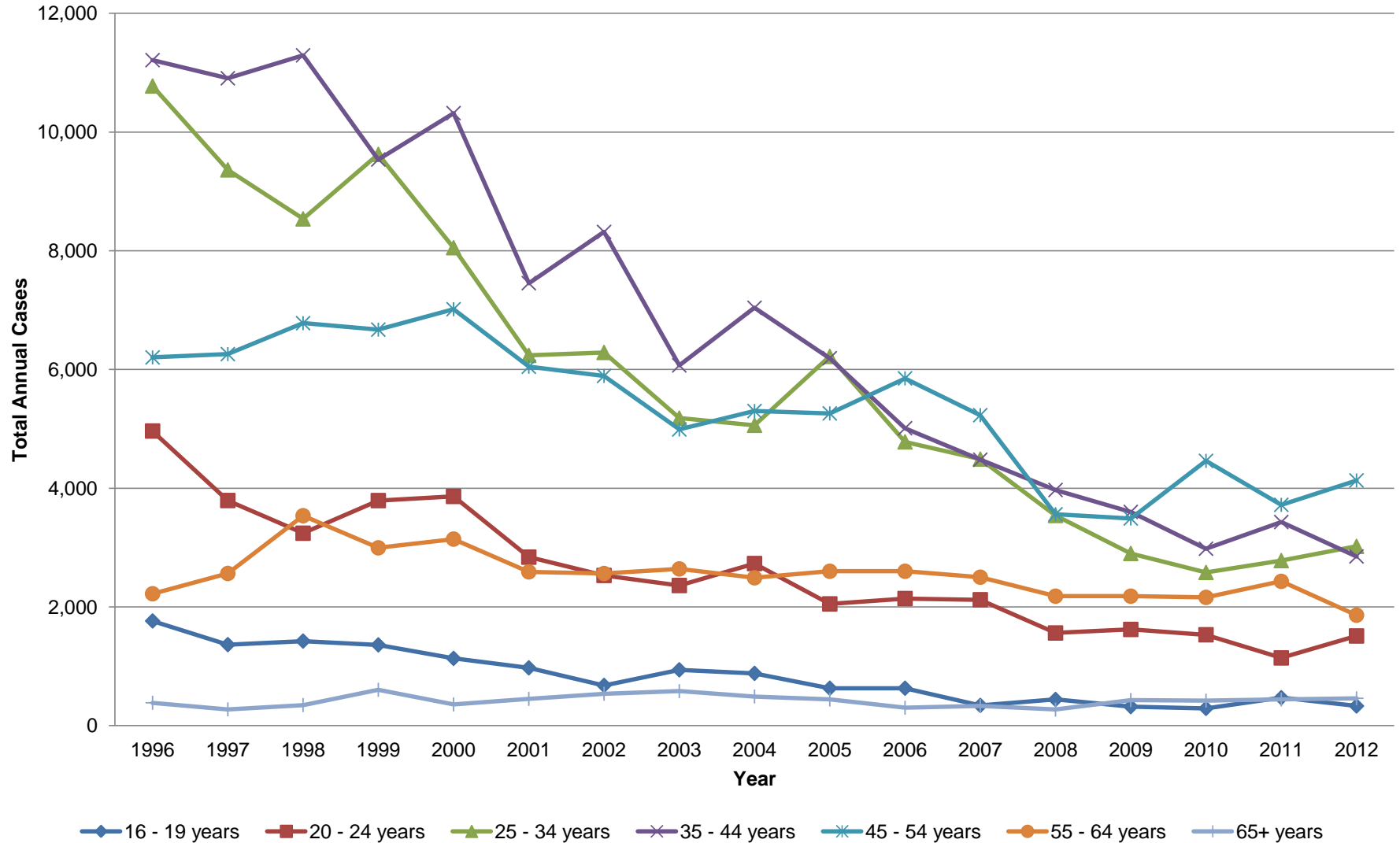
Age Group	2006		2007		2008		2009		2010	
	Missouri	U.S.	Missouri	U.S.	Missouri	U.S.	Missouri	U.S.	Missouri	U.S.
16 - 19 years	630	39,330	340	35,250	440	31,010	320	22,330	290	22,140
20 - 24 years	2,140	132,120	2,120	124,550	1,560	107,880	1,620	91,780	1,530	87,370
25 - 34 years	4,780	270,670	4,490	260,080	3,540	239,580	2,900	209,670	2,580	201,710
35 - 44 years	5,010	301,700	4,480	283,660	3,970	251,490	3,600	231,750	2,980	208,520
45 - 54 years	5,850	266,660	5,230	271,300	3,560	261,030	3,490	236,030	4,460	239,100
55 - 64 years	2,600	134,030	2,500	138,960	2,180	142,840	2,180	132,110	2,160	132,900
65+ years	300	25,170	330	25,140	270	28,420	430	27,620	420	27,680

Age Group	2011		2012		Average Number of Cases per Year	
	Missouri	U.S.	Missouri	U.S.	Missouri	U.S.
16 - 19 years	470	20,030	330	21,170	821	41,321
20 - 24 years	1,140	85,940	1,510	89,590	2,575	146,655
25 - 34 years	2,780	198,660	3,020	202,200	5,849	335,660
35 - 44 years	3,430	202,270	2,850	195,270	6,745	352,802
45 - 54 years	3,720	225,680	4,130	219,150	5,344	279,151
55 - 64 years	2,430	133,740	1,860	136,880	2,544	135,340
65+ years	440	26,670	460	27,260	418	24,824

Data Notes:

- Data obtained from the United States Department of Labor, Bureau of Labor Statistics. For more information go to: <http://www.bls.gov/iif/oshcdnew.htm>
- Data for the nation was obtained from the United States Department of Labor, Bureau of Labor Statistics: Occupational Injuries/Illnesses and Fatal Injuries Profiles. More information can be found at: www.bls.gov
- Difference in industry concentration and sample size prohibit state-level data from being directly compared to other states or with national estimates

Estimated Annual Total Number of Work-Related Injuries and Illnesses Involving Days Away from Work by Age in Missouri from 1996 - 2012



Average Annual Number of Work-Related Injuries and Illnesses Involving Days Away from Work by Age in Missouri from 1996 - 2012

