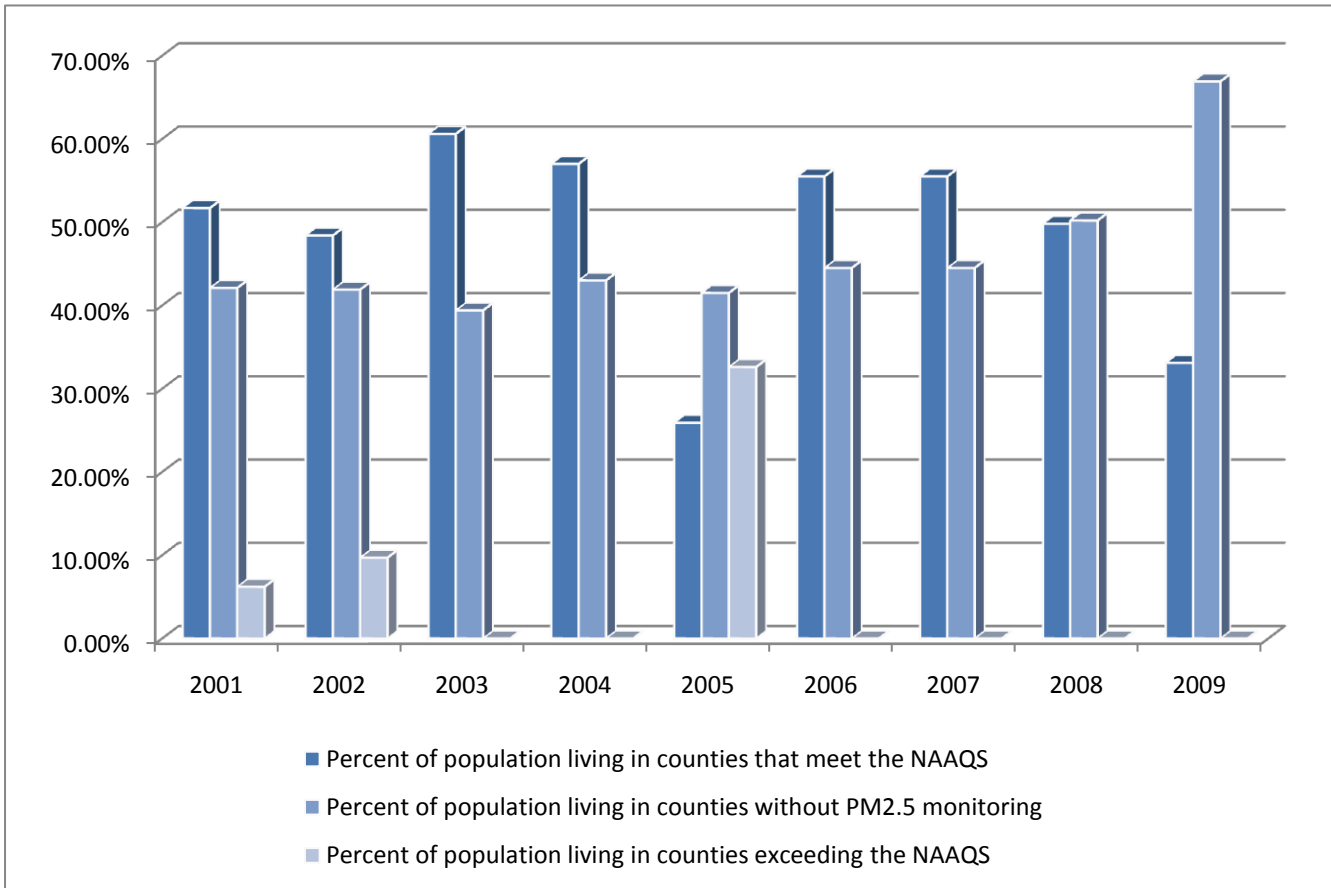


Annual percent of population living in counties exceeding the National Ambient Air Quality Standard
(compared to percent of population living in counties that meet the standard and percent of population living in counties without PM2.5 monitoring)



In Missouri, for calendar year:	Percent of population living in counties that meet the NAAQS	Percent of population living in counties without PM2.5 monitoring	Percent of population living in counties exceeding the NAAQS
2001	51.70%	42.10%	6.20%
2002	48.40%	41.90%	9.70%
2003	60.60%	39.40%	0.00%
2004	57.00%	43.00%	0.00%
2005	25.90%	41.50%	32.60%
2006	55.50%	44.50%	0.00%
2007	55.50%	44.50%	0.00%
2008	49.80%	50.20%	0.00%
2009	33.10%	66.90%	0.00%